

CAPITOL HILL ECODISTRICT

ADVANCING NEIGHBORHOOD SUSTAINABILITY

ANNUAL
REPORT

20
15

DEAR FRIENDS

2015 was an important year for the EcoDistrict. Some highlights include:

- ◆ Formal recognition by the City of Seattle
- ◆ Publication of an innovative shared parking report
- ◆ Pilot of pedestrian-only streets on Pike Street
- ◆ Publication of a report addressing problem dumpsters on our streets and sidewalks

We've described some of this work in the following pages as well as what is on the agenda in 2016. Of course, the best way to get to know the EcoDistrict is to get involved!

Many thanks to the fantastic volunteers, partners, sponsors and eco-enthusiasts who made 2015 a success. The Capitol Hill EcoDistrict is the first official EcoDistrict in Seattle and one of the most active in the country.

We couldn't do this work without you. Thank you for your interest and support.

Sincerely,



Joel Sisolak
Sustainability Director
Capitol Hill Housing



CONTENTS

2015 Highlights	1
Charting Progress	3
Projects & Partnerships	7
Leadership	10
Thank You	11
2016 Outlook	12



HIGHLIGHTS

EQUITY IS OUR GUIDE

In 2015, we formed an Equity and Engagement Working Group to bring greater intentionality to including greater diversity in leading EcoDistrict initiatives and incorporating equity priorities into the design and implementation of every initiative. The working group created a questionnaire for reviewing all present and future projects that has already been applied to shaping 2016 projects. Organizational emphasis on equity also has inspired a major programmatic focus for 2016, the engagement of neighborhood renters.



THE CITY IS OUR PARTNER

Four years after its founding, the Capitol Hill EcoDistrict was formally recognized by the Seattle City Council and Mayor as the City's partner in addressing sustainability challenges on Capitol Hill. What does that mean? We have developed a successful model for community development that supports City environmental, equity and cultural goals at the neighborhood scale. These goals include affordability, livability and a healthy place for people and urban wildlife. Read more about Resolution 31562 here: <http://bit.ly/eco-resolution>



LIVABLE DENSITY IS OUR GOAL

The Capitol Hill EcoDistrict is a proud recipient of a Futurewise 2015 Livable Communities Award for Equity and Environment.



“ The Capitol Hill EcoDistrict was chosen because of their vision and leadership in finding solutions to Capitol Hill’s most pressing sustainability challenges. From promoting equitable transit-oriented development to facilitating public funding for pedestrian improvements, the Capitol Hill EcoDistrict’s collaborative and innovative approach is creating socially equitable, environmentally resilient and culturally vibrant neighborhoods for present and future generations. ”
















- Futurewise

CHARTING

PROGRESS

THE ECODISTRICT INDEX

The EcoDistrict Index is a set of indicators to track progress in 8 performance areas. An initial set of indicators were selected and baseline data collected in 2014.

PA	Target for 2030
	Reduce building EUI by 50%
	Reduce building potable WUI by 50%
	Achieve 70% waste diversion
	Achieve 21% tree canopy cover
	Achieve 100% of district within 1/4 mile of park
	Achieve 100% of district within 1/2 mile of grocery store
	Double P-Patch Plots within Walking Distance
	Double Farmers Market Shopper Count by All Incomes
	Achieve 0 serious injuries, fatalities from traffic collisions
	Reduce SOV commute rate for residents to 15%
	Double Transit Boardings and Alightings
	Increase Pedestrian Traffic at Selected Intersections by 33%
	Triple Bicycle Traffic at Selected Intersections
	< 15% income spent on transportation
	< 30% income spent on housing

With updated data from 2015, we can start to see how the neighborhood is succeeding or falling behind in meeting some of these goals: shopping for healthy foods at the farmers market, biking, and diverting waste away from landfills. As we have updated information to report, we will add updates on our for other goals.

INDEX - 2015 UPDATE HIGHLIGHTS



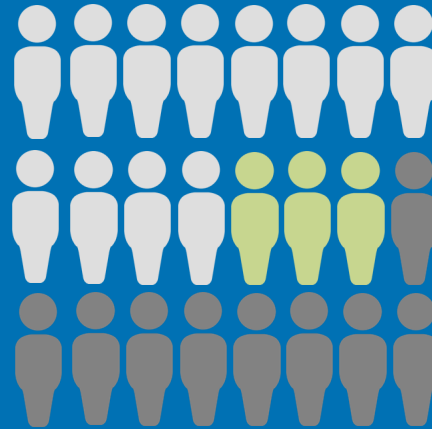
Shopping for healthy fruits and vegetables at the farmers market grew 23% in 2015


Baseline Shoppers in 2013


Additional Shoppers in 2015


Target Shoppers in 2030

The Capitol Hill Farmers Market made big progress towards doubling shoppers at all incomes



90,000

total Farmers Market Shoppers in 2015

23%

overall increase in Farmers Market Shoppers in 2015

25%

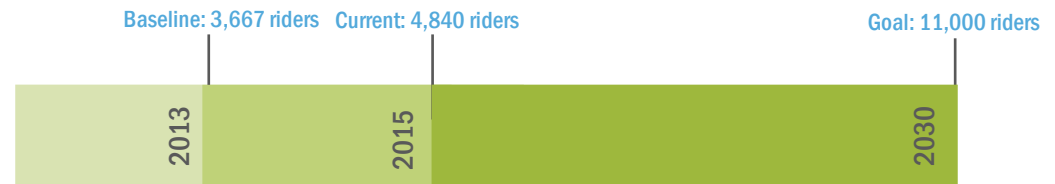
increase in EBT Farmers Market Shoppers in 2015

INDEX - 2015 UPDATE HIGHLIGHTS



Bicycle trips are
up 32% in 2015

44% of the way towards tripling bicycling trips in Capitol Hill



**Bicycle trips counted during peak hours at selected intersections*

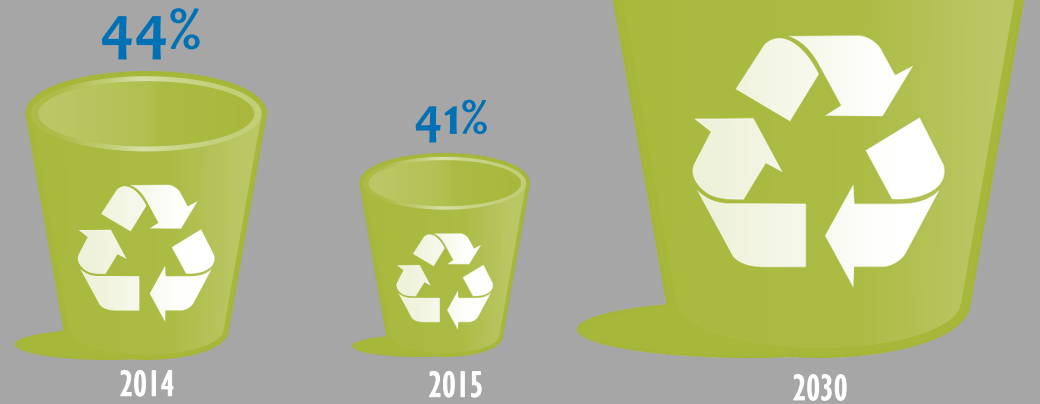
INDEX - 2015 UPDATE HIGHLIGHTS



Waste diversion has fallen
3% in 2015

*Good thing we are starting
a new recycling program!*

Achieve Waste Diversion Of



AFFORDABLE SOLAR

In 2014 we worked with Seattle City Light to install a community solar project atop the Holiday Apartments, a 30-unit CHH affordable housing building at 10th and John Street. The 925 “solar units” of the project were fully subscribed by Spring 2015 and since installation have generated more than [30,000 kilowatt hours](#) of power. It was a sunny summer and fall, and the system has been generating more energy than we even hoped. Now it’s time to expand to other buildings.

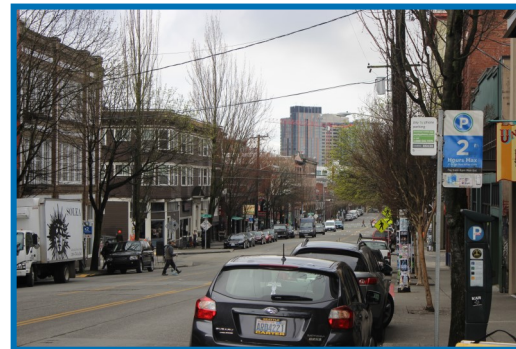
With funding from Enterprise Community Partners, we worked with our partners at NW SEED to develop “recipes” for putting more solar atop affordable housing properties in Washington State. Their report was released in December and will provide the grist for meetings with policy makers in 2016 and building more projects as early as 2017.



SHARED PARKING

In the spring of 2015 we released a report *District Shared Parking* detailing the finds from our parking research in 2014 and illustrating a vision for a district-based shared parking system to be piloted in the Pike Pine Corridor of Capitol Hill. We presented our findings at the American Planning Association’s National Conference and other local forums.

In response to our work, the Seattle City Council allocated funding to further district shared parking in 2016. Advances in garage sensor technology make up an integral component of the report’s recommendations leading us to build a relationship with the Sensor Systems Laboratory of the University of Washington. We continue to pursue funding to pilot our vision in Capitol Hill Housing buildings and the broader neighborhood.



PEDESTRIAN STREETS

In August 2015, the Pike Pine Pedestrian Streets Pilot removed cars from 3 blocks of Pike Street on 3 Saturday nights. This Pilot - part crowd management, part traffic safety, part cultural place-making - was a response to the growing nightlife crowds present on these blocks and relied on a partnership with the Capitol Hill Chamber of Commerce and multiple City of Seattle departments. Resident, property owner, and business outreach combined with case study research from similar neighborhoods in other cities informed the contours of the program.

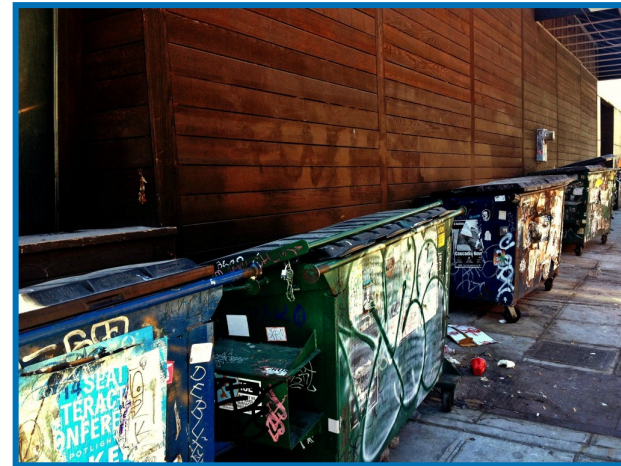
Approximately 28,000 people participated in each of the three nights. The Pilot was accompanied by extensive data collection on changes in behavior and use of space through the summer. Debrief interviews, community meetings and 272 online surveys provided insight into the strengths and weaknesses of each night's plan and implementation. A full report of findings and the City of Seattle's recommendations for next steps will be released in spring 2016.



DUMPSTERS

Garbage isn't glamorous and most people don't want to think about, but it's a reality of our daily lives and when the systems to manage waste break down, things get messy. This is especially true in a dense urban neighborhood like Capitol Hill.

In 2015, we took on the health and safety issue of dumpsters on our streets and sidewalks. With funding from the Only In Seattle program, worked with the Capitol Hill Chamber, Seattle Public Utilities, Recology CleanScapes and other waste haulers to develop a better understanding of the problem and offer recommendations based on what has been done in other cities. In 2016, we will continue work on the issue with the Clean and Safe Committee of the Chamber and help move the neighborhood towards solutions that work for both local businesses and residents.



CAPITOL HILL COMMUNITY COUNCIL

We had a great partnership with the Capitol Hill Community Council in 2015, are proud to contribute to their success, and look forward to continuing to work together in 2016. This last year, the Council provided discussion, education, and advocacy on some of the biggest neighborhood issues including homelessness, gentrification, criminal justice reform, substance abuse and mental health services, housing, and transportation policy. For the first time in many years, the Council organized volunteer projects and social events and made big strides in fundraising. The success of the Council in reaching a broad neighborhood audience has contributed to the formation of the EcoDistrict's 2016 Renter Initiative.



CAPITOL HILL 2030

Capitol Hill Housing and the EcoDistrict have cooperated with the Seattle 2030 District since the 2030 District's founding in 2011. We have adopted the 2030 District goals for Capitol Hill Housing's own portfolio, used the goals as a performance baseline within the Capitol Hill EcoDistrict Index, and help to recruit additional members as participants in the 2030 District. We are proud to have over 513,480 square feet of CHH's own property and over 4,546,655 feet in the EcoDistrict participating in the water, energy and carbon reduction goals of the 2030 District.



We are especially interested in expanding the number of multifamily properties within the 2030 District, which has so far mostly served the large commercial buildings in downtown Seattle. In 2015, Blanton Turner brought its' entire portfolio of multifamily properties (1,169,000 sq.ft.) into the Seattle 2030 District, including nearly a quarter million square feet on Capitol Hill.

CAPITOL HILL TOOL LIBRARY

The Capitol Hill Tool Library is a project of Sustainable Capitol Hill, a local "network of neighbors, businesses and community groups dedicated to making Capitol Hill a sustainable community." In 2015, CHH played a minor role in fundraising for the project. With the Tool Library, Sustainable Capitol Hill aims to build community, empower people and the neighborhood to be more resilient, and reduce waste associated with individual consumption. Construction on the space at 420 E. Pike St. is underway and expected to open soon. When it opens, the Tool Library won't just lend out hammers and step ladders. It will host a variety of items that a person might only use occasionally, such as the usual woodworking and gardening tools, but also cooking equipment, food preservation gear, sewing stuff, etc. The Capitol Hill Tool Library also will host classes, events and fix-it collectives.



LEADERSHIP

STEERING COMMITTEE

Michael Mariano (Co-Chair), *Schemata Workshop*
Neelima Shah (Co-Chair), *Bullitt Foundation*
Alicia Daniels Uhlig, *GGLO*
Cathy Hillenbrand, *CHH Board of Directors*
Charles Bowers, *CBRE/Group Health*
Clayton Smith, *Sustainable Capitol Hill*
Erik Rundell, *EcoNorthwest*
Erika Melroy, *Recology CleanScapes*
Heather Burpee, *University of Washington*
Ian Siadak, *Seattle Central College*
Janet Shull, *City of Seattle - DPD*
Joseph David, *Point 32*
Julie West, *Seattle/King County Public Health*
Lauren Rochholz, *Seattle University*
Leon Garnett, *Centerstone/Squire Park Community Council*
Liz Dunn, *Dunn & Hobbes*
Matthew Combe, *Seattle 2030 District*
Michael Archambault, *Capitol Hill Community Council*
Michelle Caulfield, *City of Seattle - OSE*
Michelle Hippler, *Artist*
Sierra Hansen, *Capitol Hill Chamber of Commerce*
Whitney Fraser, *Environmental International*

CHH STAFF

Joel Sisolak, *Sustainability Director*
Alex Brennan, *Senior Planner*
McCaela Daffern, *Sustainability Manager*
Jess Blanch, *Enterprise Rose Fellow*
Simone Hamilton, *Fund Development Associate*



VOLUNTEERS

Huge thank you to all of our volunteers who have donated countless hours towards our projects and partnerships. Without your support, none of this work would be possible.

One of the many rock star volunteers we want to thank is Arielle Lawson. Arielle served a year with us through the Lutheran Volunteer Program and we worked her HARD. She was our outreach and engagement coordinator and it's hard to see how our community solar program especially could have succeeded without her tireless efforts.

Thank you, Arielle!



SPONSORS



MAJOR FUNDERS



2016 OUTLOOK

2016 will include continued work in some key areas:

- ◆ Promoting resource conservation and renewable energy
- ◆ Fixing on- and off-street parking
- ◆ Increasing safety in public spaces
- ◆ Improving walkability.

We'll also roll out some new initiatives, including beginning a renter leadership development program that includes a September renter summit focused on solving Capitol Hill housing affordability and livability challenges, forming a Land Use and Review Committee that works with developers to incorporate EcoDistrict priorities into new sites and buildings, and creating a tenant-focused recycling program in 10 Capitol Hill Housing properties.

We also look forward to more collaborations with our neighborhood partners, including the Capitol Hill Community Council, Capitol Hill Chamber, Cal Anderson Park Alliance, Capitol Hill Champion, Sustainable Capitol Hill and others!

